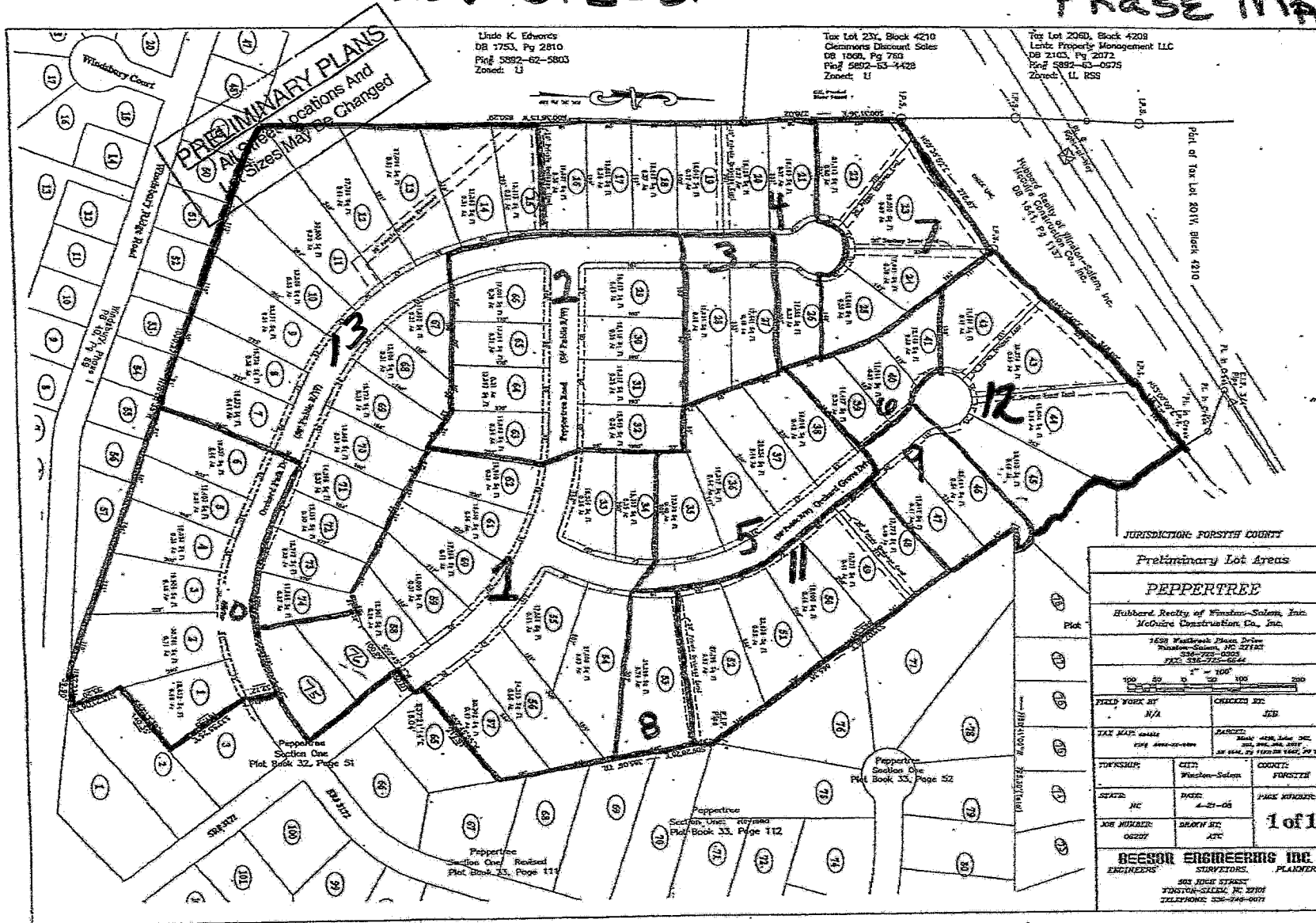


*** SEE PLAT MAPS
FOR CORRECT
LOT SIZES. ***

**PEPPERTREE
SECTION IV
PHASE MAP**



Linda K. Edwards
DB 1753, Pg 2810
Plat 5892-62-5803
Zoned: U

Tor Lot 23Y, Block 4210
Clemmons Discount Sales
DB 1069, Pg 780
Plat 5892-63-9428
Zoned: U

Tor Lot 236D, Block 4208
Lentz Property Management LLC
DB 2163, Pg 2072
Plat 5892-63-0675
Zoned: LL R55

JURISDICTION: FORSYTH COUNTY

Preliminary Lot Areas

PEPPERTREE

Hubbard Realty of Winston-Salem, Inc.
McGuire Construction Co., Inc.

1408 Wakeforest Plaza Drive
Fountain-Salem, NC 27718
703-757-0000
FAX: 703-757-0002

1" = 100'
100 50 0 50 100 200

FIELD WORK BY	N/A	CHECKED BY	JEB
TAX MAPS	ISSUED	DATE	10/20/06

TOWNSHIP	WELLS	COUNTY	FORSYTH
SECTION	14	RANGE	4-29-06

JOB NUMBER	06207	DRAWN BY	ATC	1 of 1
DATE	10/20/06	CHECKED BY	JEB	

BEESON ENGINEERING INC.
ENGINEERS SURVEYORS PLANNERS

503 HIGH STAGES
FOUNTAIN-SALEM, NC 27718
TELEPHONE: 336-296-0077

Preliminary Plan - NOT TO BE USED FOR SALES, NEGOTIATION OR CONVEYANCE